

H2Teesside Project

Planning Inspectorate Reference: EN070009

Land within the boroughs of Redcar and Cleveland and Stockton-on-Tees, Teesside and within the borough of Hartlepool, County Durham

Document Reference: 2.6 Indicative Hydrogen Production Facility and Above Ground Installations Plan

The Infrastructure Planning (Applications: Prescribed Forms and Procedure) Regulations 2009 - Regulation 5(2)(o)

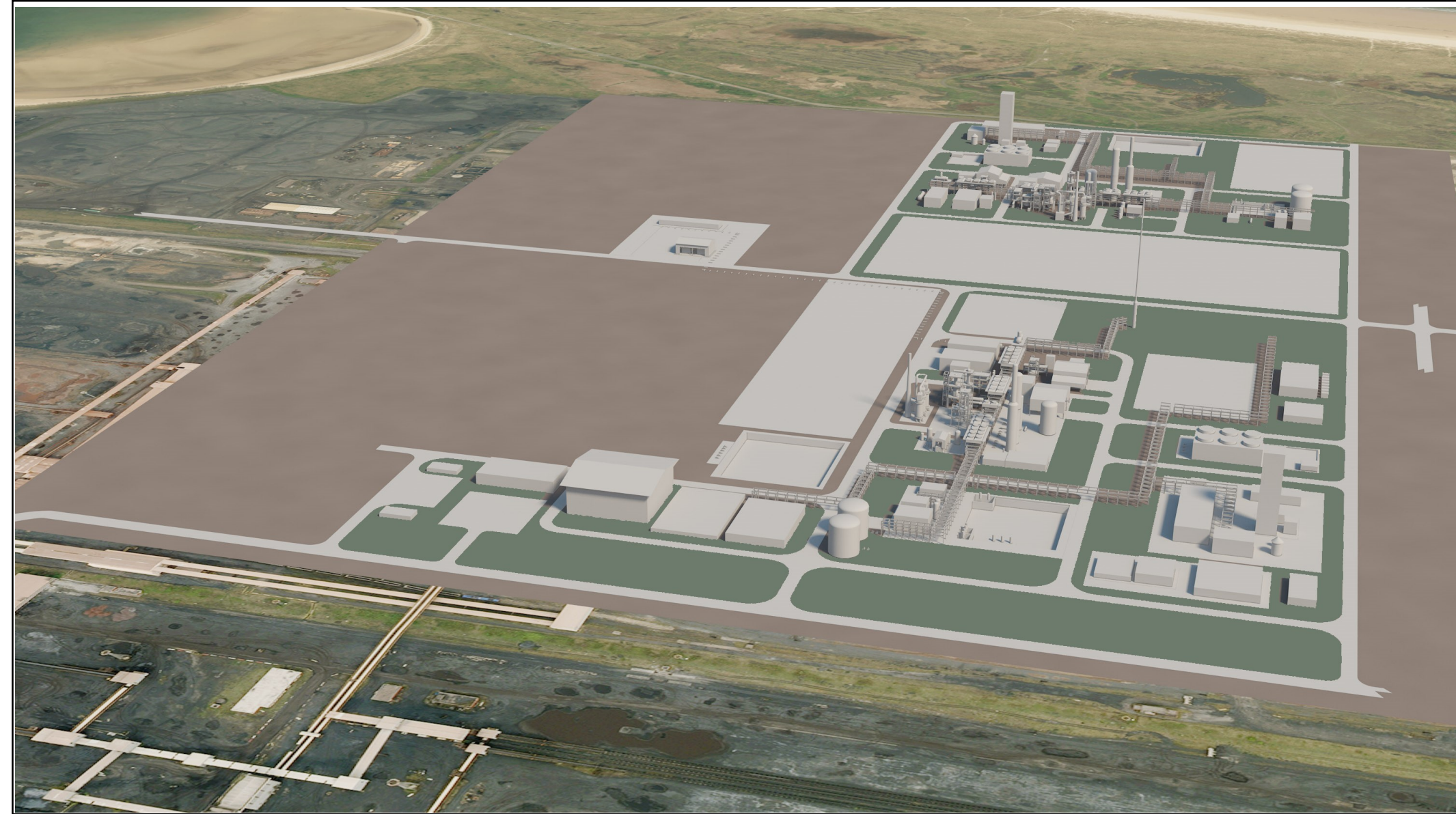


Applicant: H2 Teesside Ltd

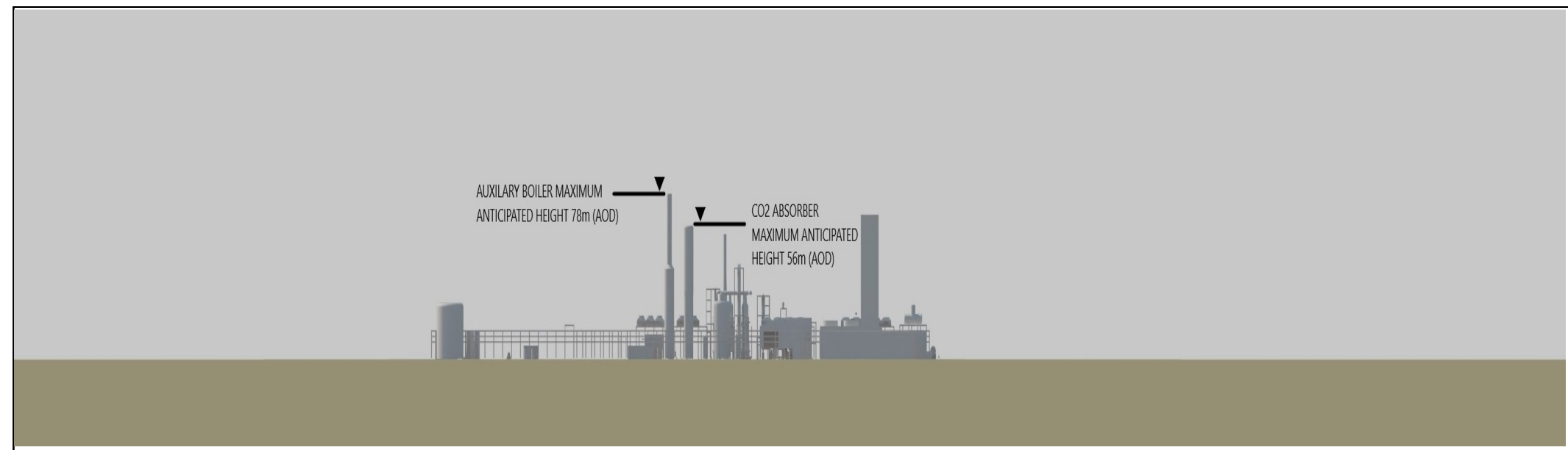
Date: August 2024

DOCUMENT HISTORY

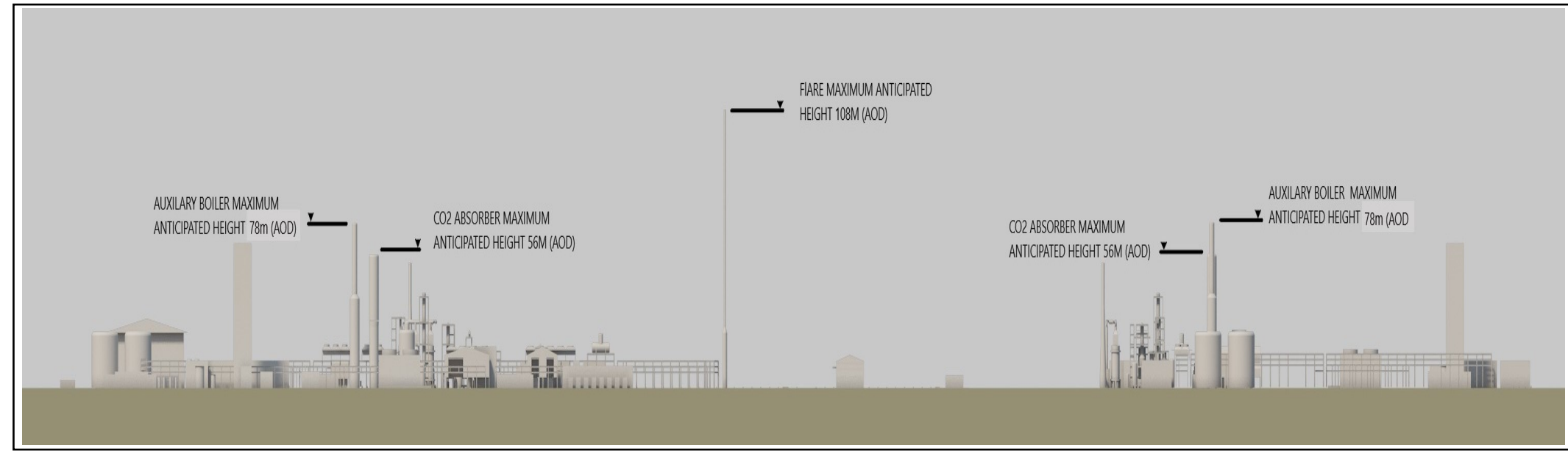
DOCUMENT REF	2.6		
REVISION	1		
AUTHOR	MARYSE BUOT		
SIGNED	MB	DATE	22.08.24
APPROVED BY	JORDAN LEWIS		
SIGNED	JL	DATE	22.08.24



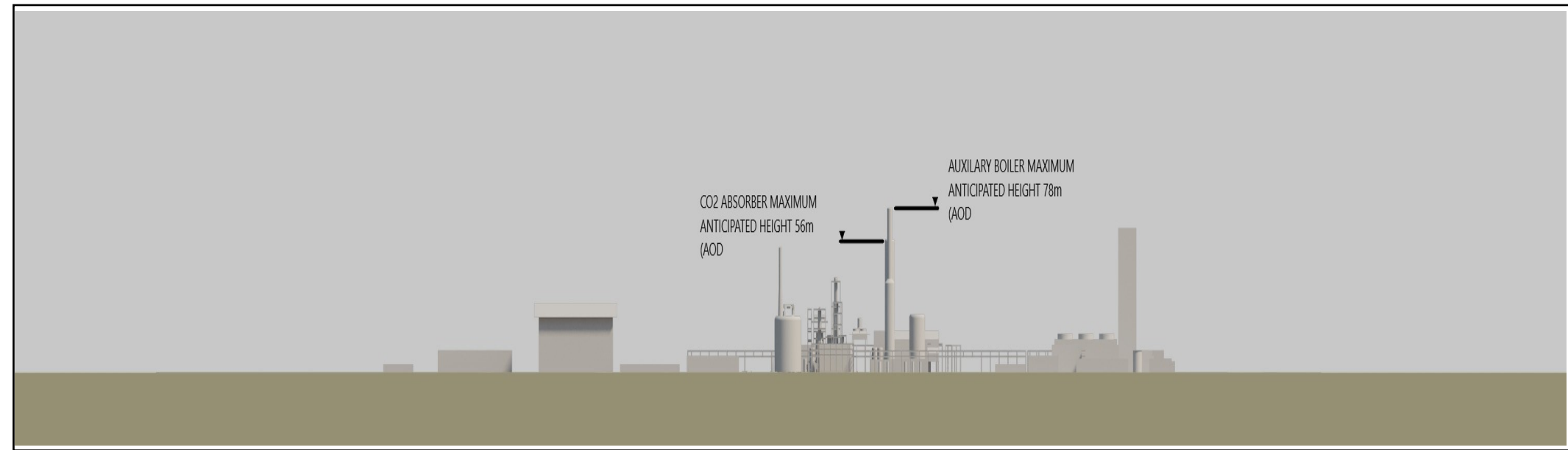
Isometric View (3D)



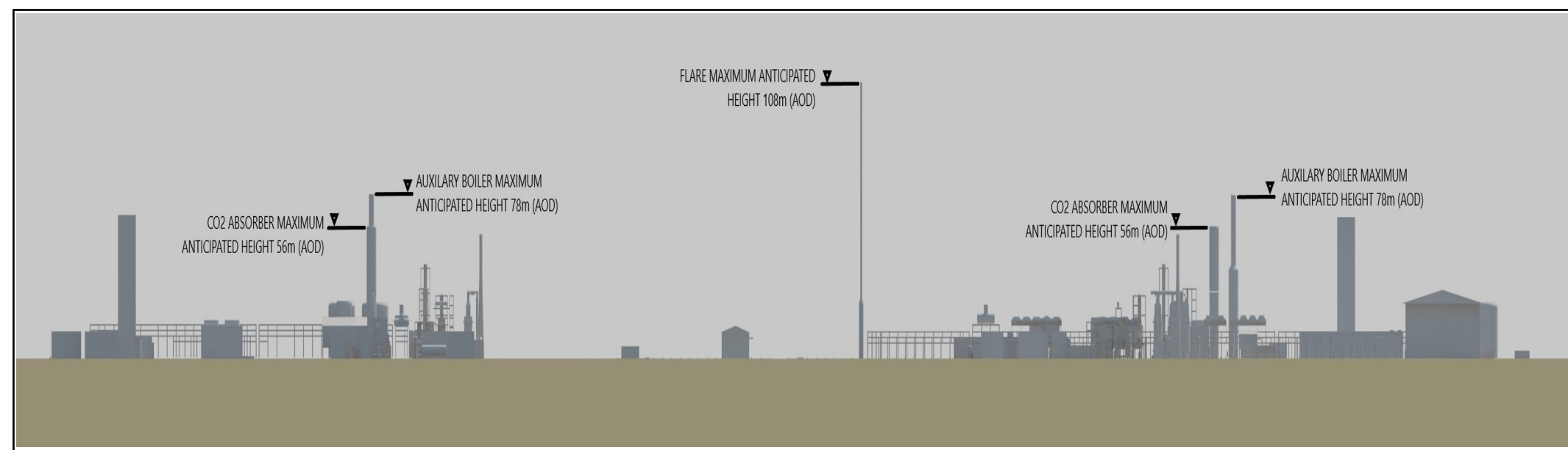
Elevation Looking North



Elevation Looking East



Elevation Looking South



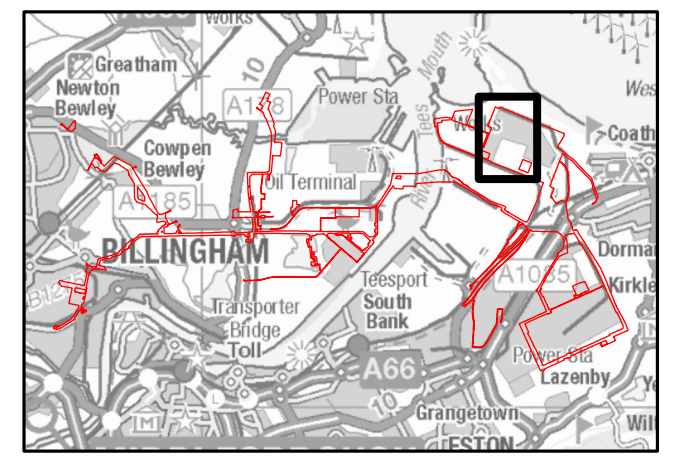
Elevation Looking West



AECOM Limited
100 Embankment,
Cathedral Approach,
Manchester, M3 7FB
www.aecom.com

- Order Limits
- Plot Plan
- Work No. 1 - Carbon Capture Enabled Hydrogen Production Facility
- 1 Air Separation Unit Cold Box
- 2 Auxiliary Boiler
- 3 Auxiliary Boiler Stack
- 4 High Pressure and Low Pressure Flash Vessels
- 5 CO₂ Absorber Column
- 6 Surface Water Drainage Pond
- 7 Start-up Fired Heater Stack
- 8 Flare Stack
- 9 Auxiliary Boiler Stack
- 10 Auxiliary Boiler
- 11 Start-up Fired Heater Stack
- 12 High Pressure and Low Pressure Flash Vessels
- 13 CO₂ Absorber Column
- 14 Surface Water Drainage Pond
- 15 Air Separation Unit Cold Box

Infrastructure Planning (Applications: Prescribed Forms and Procedure) Regulations 2009 Regulation 5(2)(o).



NOTES

- 1: Reproduced from Ordnance Survey digital map data © Crown copyright 2024. All rights reserved. License number 0100031673.
- 2: Contains Ordnance Survey Data © Crown Copyright and database right 2024.

APPLICATION REFERENCE

H2T_August24_DCO_2.6_Rev1

ISSUE PURPOSE

FOR DCO APPLICATION

PROJECT NUMBER

60689030

DRAWING TITLE

Indicative Hydrogen Production Facility and Above Ground Installations Plan

DRAWING NUMBER

Drawing 1 of 5

This drawing has been prepared for the use of AECOM's client. It may not be used, modified, reproduced or relied upon by third parties, except as agreed by AECOM or as required by law. AECOM accepts no responsibility, and denies any liability whatsoever, to any party that uses or relies on this drawing without AECOM's express written consent. Do not scale this document. All measurements must be obtained from the stated dimensions.



AECOM Limited
100 Embankment,
Cathedral Approach,
Manchester, M3 7FB
www.aecom.com

 Potential Landscaping Area



Isometric View (3D)

Infrastructure Planning
(Applications: Prescribed Forms
and Procedure) Regulations 2009
Regulation 5(2)(o).

H2T_August24_DCO_2.6_Rev1

FOR DCO APPLICATION

60689030

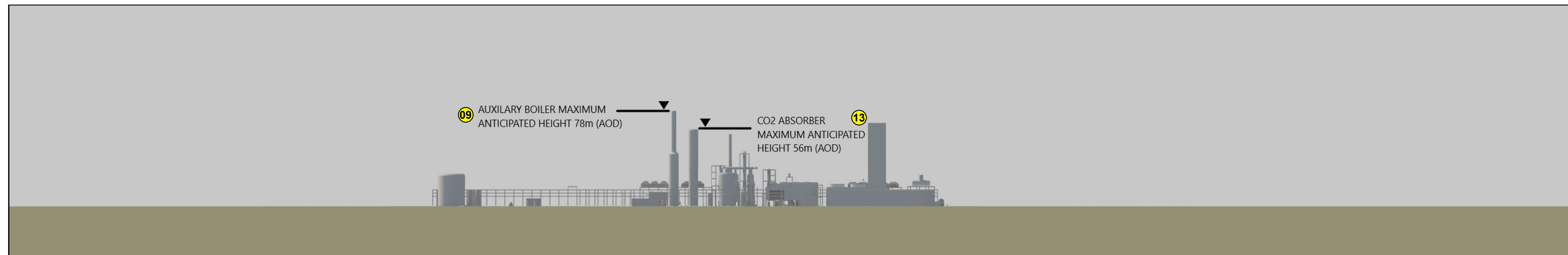
Indicative Hydrogen Production
Facility and Above Ground
Installations Plan

Drawing 2 of 5

This drawing has been prepared for the use of AECOM's client. It may not be used, modified, reproduced or relied upon by third parties, except as agreed by AECOM or as required by law. AECOM accepts no responsibility, and denies any liability whatsoever, to any party that uses or relies on this drawing without AECOM's express written consent. Do not scale this document. All measurements must be obtained from the stated dimensions.

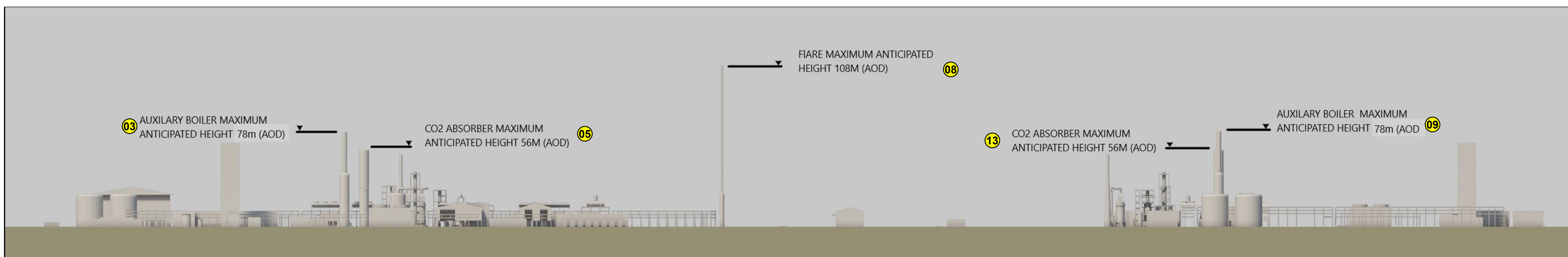


- 3 Auxiliary Boiler Stack
- 5 CO₂ Absorber Column
- 8 Flare Stack
- 9 Auxiliary Boiler Stack
- 13 CO₂ Absorber Column



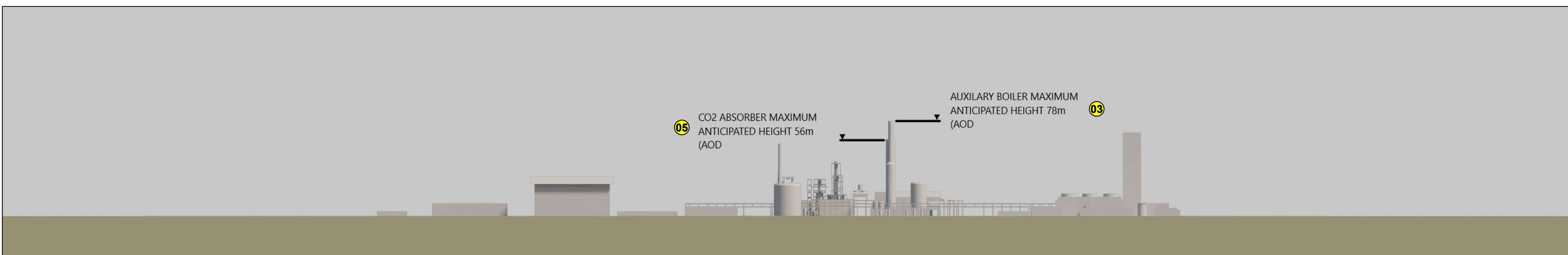
Elevation Looking North

Scale 1:2500



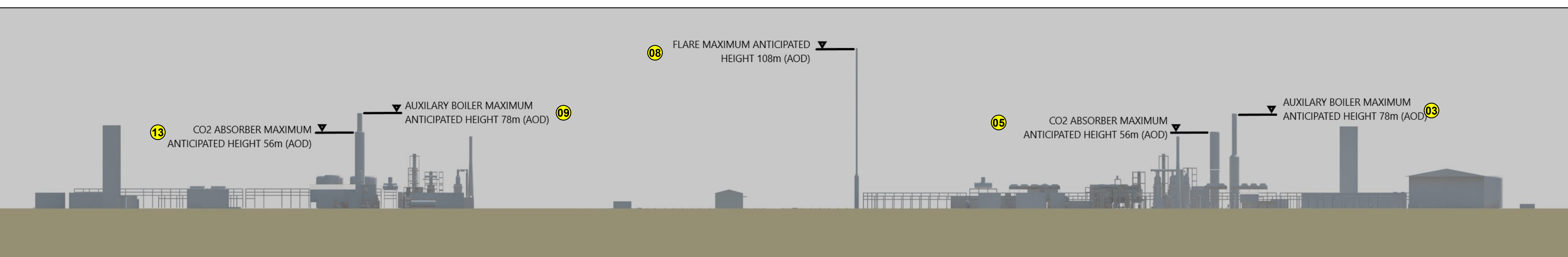
Elevation Looking East

Scale 1:2500



Elevation Looking South

Scale 1:2500



Elevation Looking West

Scale 1:2500

This drawing has been prepared for the use of AECOM's client. It may not be used, modified, reproduced or relied upon by third parties, except as agreed by AECOM or as required by law. AECOM accepts no responsibility, and denies any liability whatsoever, to any party that uses or relies on this drawing without AECOM's express written consent. Do not scale this document. All measurements must be obtained from the stated dimensions.

Infrastructure Planning
(Applications: Prescribed Forms
and Procedure) Regulations 2009
Regulation 5(2)(o).

APPLICATION REFERENCE

H2T_August24_DCO_2.6_Rev1

ISSUE PURPOSE

FOR DCO APPLICATION

PROJECT NUMBER

60689030

DRAWING TITLE

Indicative Hydrogen Production
Facility and Above Ground
Installations Plan

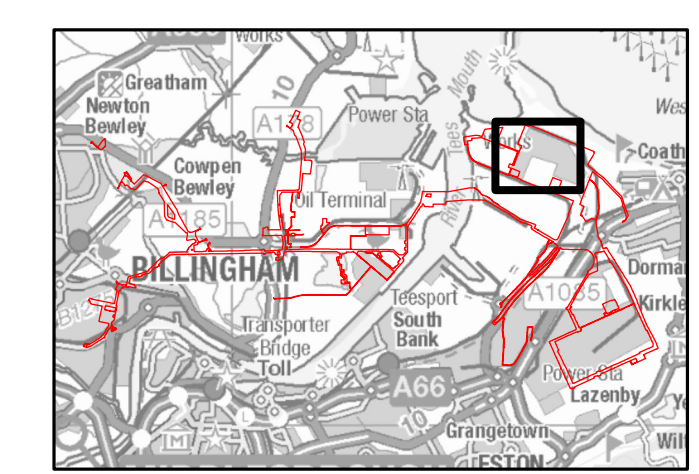
DRAWING NUMBER

Drawing 3 of 5



- LEGEND**
- Order Limits
 - Plot Plan
 - Work No. 1 - Carbon Capture Enabled Hydrogen Production Facility
- 1 Air Separation Unit Cold Box
 - 2 Auxiliary Boiler
 - 3 Auxiliary Boiler Stack
 - 4 High Pressure and Low Pressure Flash Vessels
 - 5 CO₂ Absorber Column
 - 6 Surface Water Drainage Pond
 - 7 Start-up Fired Heater Stack
 - 8 Flare Stack
 - 9 Auxiliary Boiler Stack
 - 10 Auxiliary Boiler
 - 11 Start-up Fired Heater Stack
 - 12 High Pressure and Low Pressure Flash Vessels
 - 13 CO₂ Absorber Column
 - 14 Surface Water Drainage Pond
 - 15 Air Separation Unit Cold Box

**Infrastructure Planning
(Applications: Prescribed Forms
and Procedure) Regulations 2009
Regulation 5(2)(o).**



NOTES

- 1: Reproduced from Ordnance Survey digital map data © Crown copyright 2024. All rights reserved. License number 0100031673.
- 2: Contains Ordnance Survey Data © Crown Copyright and database right 2024.

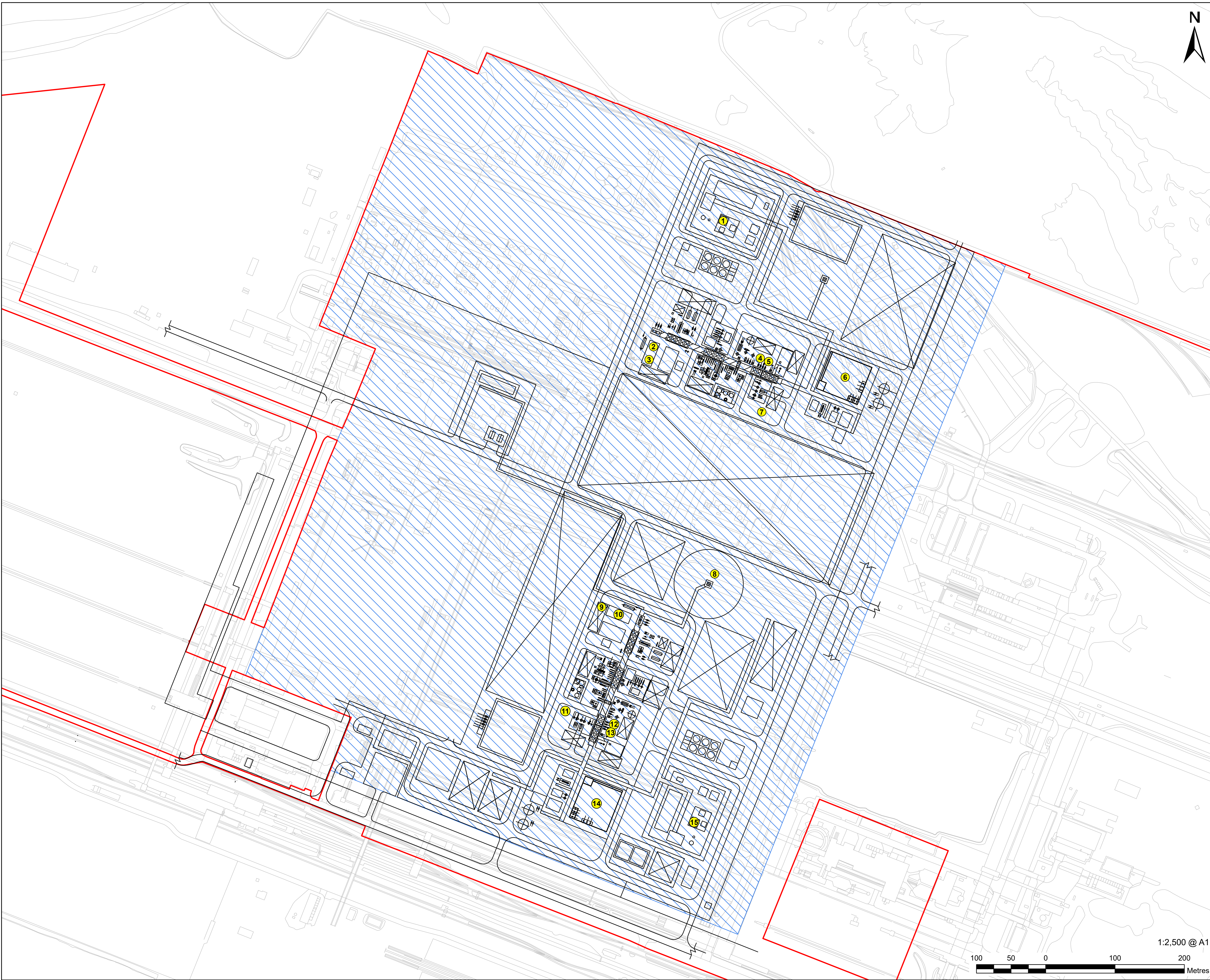
APPLICATION REFERENCE
H2T_August24_DCO_2.6_Rev1

ISSUE PURPOSE
FOR DCO APPLICATION

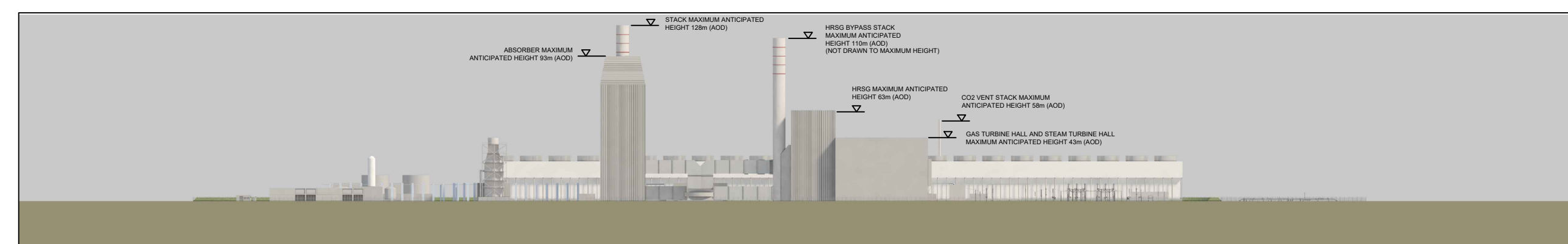
PROJECT NUMBER
60689030

DRAWING TITLE
Indicative Hydrogen Production
Facility and Above Ground
Installations Plan

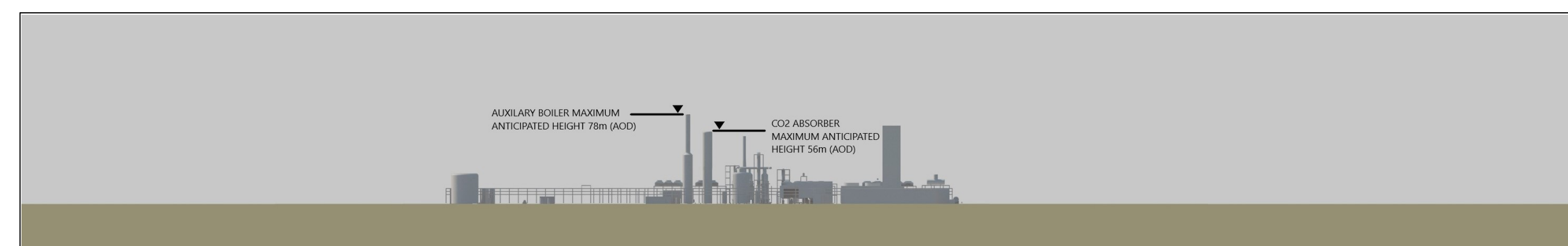
DRAWING NUMBER
Drawing 4 of 5



This drawing has been prepared for the use of AECOM's client. It may not be used, modified, reproduced or relied upon by third parties, except as agreed by AECOM, or as required by law. AECOM accepts no responsibility, and denies any liability whatsoever, to any party that uses or relies on this drawing without AECOM's express written consent. Do not scale this document. All measurements must be obtained from the stated dimensions.



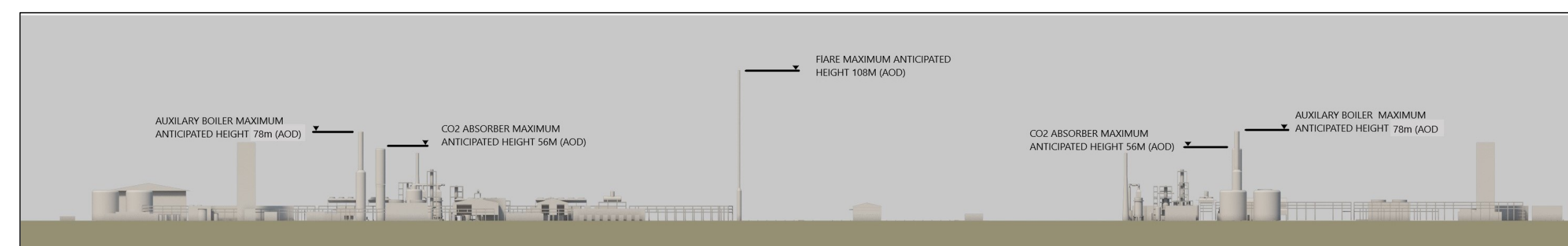
NZT ELEVATION LOOKING NORTH
Scale 1:2500



H2T ELEVATION LOOKING NORTH
Scale 1:2500



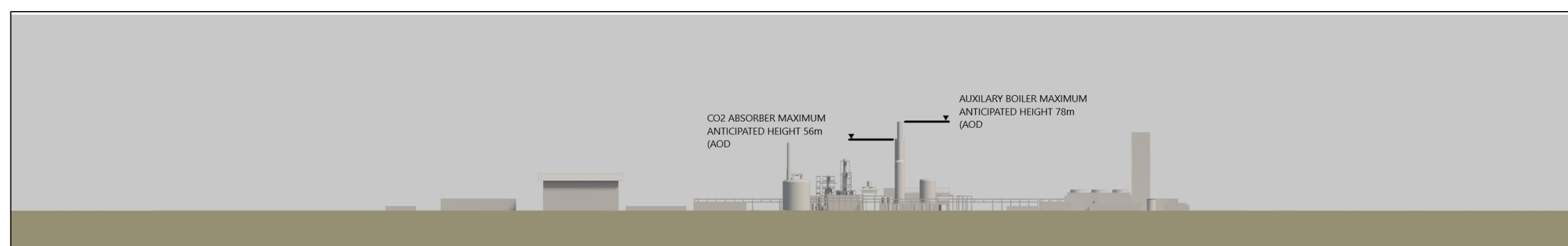
NZT ELEVATION LOOKING EAST
Scale 1:2500



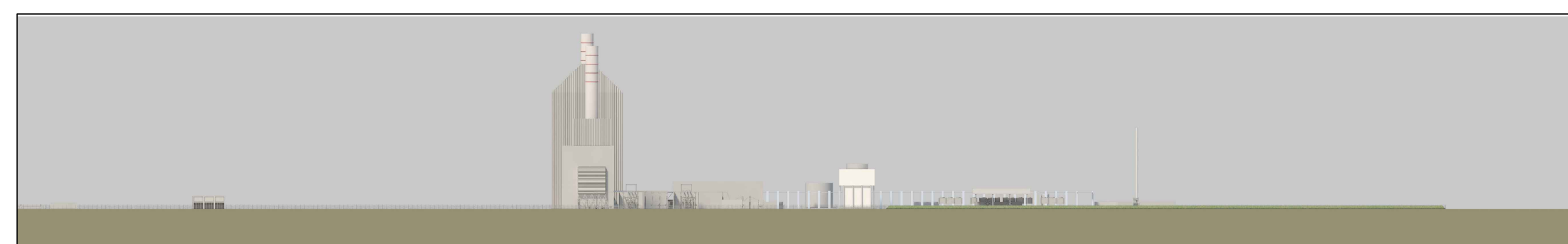
H2T ELEVATION LOOKING EAST
Scale 1:2500



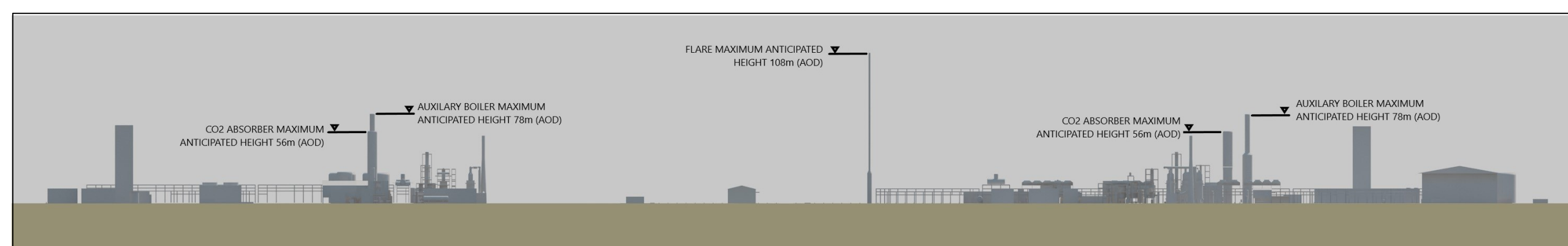
NZT ELEVATION LOOKING SOUTH
Scale 1:2500



H2T ELEVATION LOOKING SOUTH
Scale 1:2500



NZT ELEVATION LOOKING WEST
Scale 1:2500



H2T ELEVATION LOOKING WEST
Scale 1:2500

This drawing has been prepared for the use of AECOM's client. It may not be used, modified, reproduced or relied upon by third parties, except as agreed by AECOM or as required by law. AECOM accepts no responsibility, and denies any liability whatsoever, to any party that uses or relies on this drawing without AECOM's express written consent. Do not scale this document. All measurements must be obtained from the stated dimensions.

**Infrastructure Planning
(Applications: Prescribed Forms
and Procedure) Regulations 2009
Regulation 5(2)(o).**

APPLICATION REFERENCE

H2T_August24_DCO_2.6_Rev1

ISSUE PURPOSE

FOR DCO APPLICATION

PROJECT NUMBER

60689030

DRAWING TITLE

Indicative Hydrogen Production
Facility and Above Ground
Installations Plan

DRAWING NUMBER

Drawing 5 of 5